

Master M

EXTEND MIG WELDING EXPERIENCE





Master M



EXTEND MIG WELDING EXPERIENCE

Designed and manufactured in Finland, **Master M** is a premium and compact MIG/MAG welding machine with synergic and pulse MIG welding model options. It elevates industrial welding performance, ensuring outstanding welding quality. Designed with professional welders, Master M makes everyday welding tasks effortless and fast.

Digital arc control, fast set-up techniques, and excellent power-to-weight set new standards for weld quality and work-based efficiency, boosting welding production. Choose from three class-leading models in the compact MIG welding machine category (353, 355, or 358), featuring alternative **manual, synergic (Auto), and pulse (Auto Pulse)** welding options. Weld with gas-cooled guns or select the optional Master M cooling system for an integrated liquid-cooled package that maximizes the 350A 40% ED welding power and enables more extended welding periods.

Experience new levels of welding productivity and control by switching on to **MAX arc performance welding processes**. They boost welding performance in challenging steel, stainless steel, and aluminum welding applications, making the seemingly impossible possible.

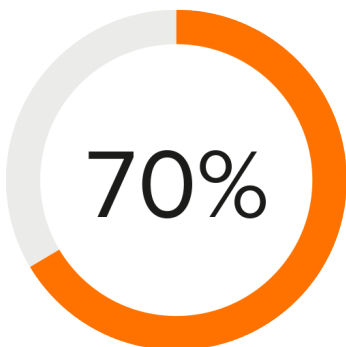
The integrated and self-charging LED work lights improve worksite safety, efficiency, and convenience. The LED light source operates with or without mains power, enhancing productivity in low-light conditions. The LED work light system is standard for all Master M compact MIG welder models.

Integrated digital connectivity opens a world of welding data through Master M, including three months free trial for **WeldEye welding management software's ArcVision** module, plus a **digital WPS (dWPS)** feature. Together, these welding quality management tools deliver the benefits of digital transformation to the very heart of the welding workplace.



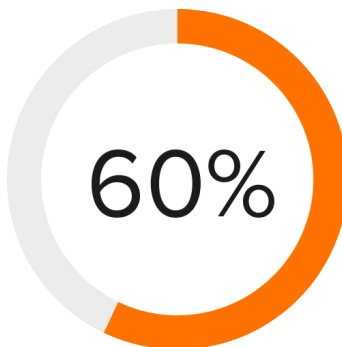
Red Dot Product Design Award winner 2023.

KEY BENEFITS



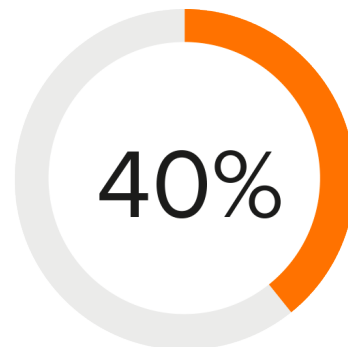
ELEVATE PRODUCTIVITY

MAX and Wise arc performance welding processes elevate productivity, increase welding speed, improve weld pool control and lower heat input.



SET FASTER

Up to 60% faster than setting parameters manually, Weld Assist is the fast set MIG/MAG welding guidance tool. Simply select your joint type, welding position and material thickness and you're ready to weld.



WORK LONGER

Compact and multi-process, Master M delivers 350A MIG/MAG welding power with 40% duty cycle, including also stick and DC TIG welding.

BENEFITS

- Red Dot Product Design Award winner 2023
- Versatile process selection for industrial welding: Manual, 1-MIG, Pulse MIG, DC TIG, and stick welding (MMA)
- Welding programs incl. Fe, Ss, Al, CuSi, CuAl, Fe Metal, Fe Rutil, FC-CrNiMo materials
- **MAX and Wise welding processes** for challenging steel, stainless steel, and aluminum welding applications
- **Cobot-ready welding machine**, fast and easy setup with a Digital Connectivity Module and Kemppi Cobotics app
- Weld Assist establishes guidance for welding parameters
- Self-charging LED work lights improve work safety
- Safe-lift grab handle for safe lifting
- Two and four-wheel carriage options for easy movement
- SuperSnake GTX sub-feeder enables maximum reach in challenging welding sites
- Track and record arc-on time and welding parameters with integrated **WeldEye** ArcVision
- Digital WPS feature ensures that welding procedure specifications are always accurately followed



- Kinetic spool brake prevents wire spool overrun, automatically slowing and reversing the filler wire spool at the end of each weld
- Compatible with generator and multi-voltage use
- Memory channels for saving the best welding parameter settings
- Weight 27 kg
- Ultimate welding comfort and long-lasting, high-quality consumables with [Flexlite GXe welding guns](#)



PRODUCT OPTIONS



Master M 353 G

Compact MIG/MAG welder with manual and synergic (Auto) welding options. Provides 350 A with a 40% duty cycle. Intelligent welding parameter setting with Weld Assist. Color LCD display and LED work lights for excellent user experience. Includes work pack welding software programs inc. Fe, Ss, Al, CuSi, CuAl, Fe Metal, Fe Rutil, FC-CrNiMo materials. Suitable for generator use.



Master M 353 GM

Compact MIG/MAG welder with manual and synergic (Auto) welding options. Provides 350 A with a 40% duty cycle. Intelligent welding parameter setting with Weld Assist. Color LCD display and LED work lights for excellent user experience. Includes work pack welding software programs inc. Fe, Ss, Al, CuSi, CuAl, Fe Metal, Fe Rutil, FC-CrNiMo materials. Generator and multi-voltage use.



Master M 355 G

Compact MIG/MAG welder with manual, synergic (Auto), pulse (Auto Pulse), and double pulse welding options. Provides 350 A with a 40% duty cycle. Intelligent welding parameter setting with Weld Assist. Color LCD display and LED work lights for excellent user experience. Includes work pack welding software programs inc. Fe, Ss, Al, CuSi, CuAl, Fe Metal, Fe Rutil, FC-CrNiMo materials. Suitable for generator use.



Master M 355 GM

Compact MIG/MAG welder with manual, synergic (Auto), pulse (Auto Pulse), and double pulse welding options. Provides 350 A with a 40% duty cycle. Intelligent welding parameter setting with Weld Assist. Color LCD display and LED work lights for excellent user experience. Includes work pack welding software programs inc. Fe, Ss, Al, CuSi, CuAl, Fe Metal, Fe Rutil, FC-CrNiMo materials. Generator use and multi-voltage use.



Master M 358 G

Compact MIG/MAG welder with manual, synergic (Auto), pulse (Auto Pulse), and double pulse welding options. Provides 350 A with a 40% duty cycle. Intelligent welding parameter setting with Weld Assist. Full-color TFT display with integrated digital connectivity to WeldEye and LED work lights for excellent user experience. Includes work pack welding software programs inc. Fe, Ss, Al, CuSi, CuAl, Fe Metal, Fe Rutil, FC-CrNiMo materials. Suitable for generator use.



Master M 358 GM

Compact MIG/MAG welder with manual, synergic (Auto) pulse (Auto Pulse), and double pulse welding options. Provides 350 A with a 40% duty cycle. Intelligent welding parameter setting with Weld Assist. Full-color TFT display with integrated digital connectivity to WeldEye and LED work lights for excellent user experience. Includes work pack welding software programs inc. Fe, Ss, Al, CuSi, CuAl, Fe Metal, Fe Rutil, FC-CrNiMo materials. Generator and multi-voltage use.



MAX COOL

MAX Cool

A welding process that lowers heat input compared to traditional pulse or short arc process, improving weld pool stability and control. MAX Cool is ideal for thin sheet metal fabrication, root welding, gap bridging, and joining thin extruded sections.



WiseFusion

A welding function that ensures consistent weld quality in all positions by automatically regulating arc length. Creates and maintains an optimal short-circuit characteristic in pulsed MIG/MAG and spray-arc welding.

MAX POSITION

MAX Position

A welding process that helps manage gravitational effects on a molten weld pool, leading to easier position welding. MAX Position is designed for steel, stainless steel, and aluminum welding applications.



WisePenetration+

A welding function for synergic and pulsed MIG/MAG welding that ensures weld penetration regardless of variation in the contact-tip-to-work distance. Keeps the welding power stabilized in all situations.

MAX SPEED

MAX Speed

A welding process especially designed to increase welding travel speed compared to traditional pulse or spray arc process. MAX Speed reduces labour time and welding costs in steel and stainless steel welding applications.



WiseSteel

A welding function especially designed to tackle the challenges of globular transfer. WiseSteel alternates short arc transfer with spray transfer, which produces sound welds characterized by a regular fish-scale pattern.

Master M WorkPack 1-MIG - standard welding programs in master m 353

Factory-installed work pack of welding programs for Master M 353.

Master M WorkPack Pulse - standard welding programs in master m 355 and 358

Factory-installed work pack of welding programs for Master M 355 and 358.





FEATURES



Work safely in low light conditions

Improve working efficiency and safety with or without mains power connected. LED lightning is also included to the wire feed cabinet.



Worksite safety

Master M can be suspended above the ground with a safe-lift grab handle, which ensures safe lifting and movement at the site. Grab handle is also suitable for lifting the power source by crane. For longer distances, 2- and 4-wheel transport units are available.



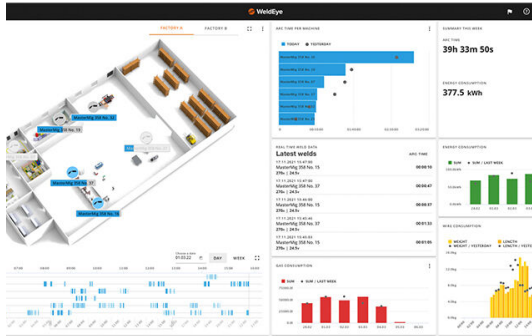
Weld Assist guides towards optimal welding parameters

Weld Assist is a guidance tool for faster setup. Simply select the joint type, welding position, and material thickness and you're ready to weld. An excellent instructive and educational tool. Weld Assist parameters can also be adjusted manually for individual preference.



Weld longer with maximum power

Master M series has two cooler options that keep the welding gun cool and the arc conditions smooth and stable. Cooler also features an easy-clean tank design and integrated LED lighting, which means you can keep an eye on the cooling liquid levels and make routine maintenance effortless. Optional cooler maximizes the use of the 350A power source with a 40% duty cycle.



Track arc on time and welding parameters

WeldEye ArcVision is an integrated Industry 4.0 solution that tracks and records arc-on time and welding parameters for better insight into welding production. Activate your free three-month trial license of WeldEye ArcVision with no obligation. The trial license also includes WeldEye's Welding Procedures module, allowing the user to test the digital WPS (dWPS) feature. Integrated connectivity and WeldEye ArcVision available in model 358 later 2022.



Work pack of welding programs included

A pre-installed work pack of welding programs is included in all models, giving you a head start to welding. Work pack includes the most common welding curves for Fe, Ss, Al, CuSi, CuAl materials. In addition, Master M 355 and 358 models can be upgraded with optional welding software.



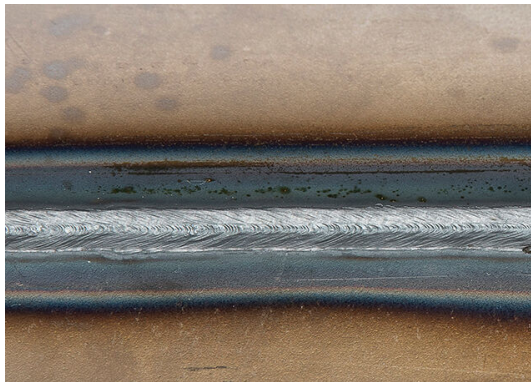
Get more reach in challenging welding sites

Extend your welding gun reach with compact sub-feeder SuperSnake GTX, including digital metering, safety isolation switch, and metal protection frame.



More control on weld pool in position welding

MAX Position helps manage gravitational effects on a molten weld pool. Improving control and confidence when working in the position, MAX Position is excellent when filling and capping in steel, stainless steel, and aluminum applications in the PF position.



Over 30% lower heat input

MAX Cool lowers heat input by up to 32%, improving control where excessive temperatures negatively impact weld pool stability and increase joint distortion. MAX Cool is ideal for a variety of applications, including thin sheet fabrication, root welding, gap bridging, and joining thin extruded sections in solid Fe, Ss, CuAl8, and CuSi3 filler materials.



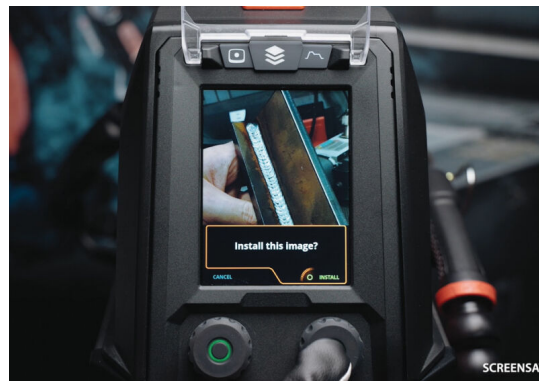
Up to 70% faster welding travel speed

MAX Speed increases welding travel speed by up to 70%* compared to traditional pulse or spray arc processes. MAX Speed produces clean top-quality weld seams, effectively reducing labor time and welding cost. MAX Speed is designed for steel and stainless steel welding applications in the PA and PB positions. Note:(*) Maximum travel speeds measured in automated and semi-automated Ss applications. Speed reductions apply in manual welding applications and Fe material.



25% faster welding

WiseFusion produces a very narrow and energy-dense arc that allows welding at a significantly higher speed without the risk of undercut. WiseFusion is up to 25% faster than conventional synergic 1-MIG and pulsed MIG, and it also facilitates weld pool control in position welding. Adaptive arc length regulation eliminates the need for constant parameter adjustment.



Customize your screen

You can add a personalized screen-saver image to Master M 358. The image must be prepared at <https://kemp.cc/screensaver> (see the Read more link) and then copied onto a USB memory stick. The supported image files are JPG, PNG, and GIF. Connect the USB memory stick to your welder's USB port and you are ready to go!



Gas guard

Connect your welding machine to a centralized shielding gas supply. The Gas Guard function prevents welding if the shielding gas supply is interrupted or is not connected. The Gas Guard feature is standard on 355 and 358 models.



Automatic calibration

Auto cable calibration ensures quality assurance even before welding starts. It measures the welding circuit resistance and calibrates the digital meters, ensuring the arc voltage displayed accurately matches the arc voltage at the welding gun. It is critical for accurate WPS compliance. The calibration must be repeated whenever you change the length of the interconnection cable, earth return cable, sub feeder cable, or welding gun cable.



Easy access to information with QR code

Each Master M model is equipped with a unique and scannable QR code. It enables easy access to all the relevant information such as product number, serial number, technical specifications, ordering codes, consumables, user manuals, websites, and local dealers' or workshops' contact information. All the information can be found with a single mobile scan.



Register and gain third warranty year for Master M welder

Designed and manufactured in Finland, we guarantee the quality of our products. As proof, we offer a global, up to three years warranty for our welders. When you purchase your welding machine from a Kemppi representative, your equipment will be registered into our warranty register database by the seller. By finalizing your warranty registration in Kemppi's My Fleet service within two months from the date of purchase, you will gain the full warranty period of three years when applicable.



ACCESSORIES



Flexlite GXe

The Flexlite GXe is a reliable, high-quality MIG/MAG torch series with optimized ergonomics and excellent welding performance.



Flexlite TX - Master M

Master M can be used for TIG welding with dedicated Flexlite TX welding torches with a Euro connector. User comfort, welding efficiency, and extended consumable parts life.



Master M Cooler

Cooling unit for easy, fast, and convenient coolant filling with integrated LED lighting for cooling liquid levels.



Master M Cooler MV

The cooling unit supports multi-voltage use. Easy, fast and convenient coolant filling with integrated LED lighting for cooling liquid levels.



SuperSnake GTX

SuperSnake GTX subfeeder provides a simple and effective distance wire feeding solution up to 30m from the wire feed unit. Compatible with X5 FastMig wire feeders and standard Euro-connected MIG welding guns.



SuperSnake GTX04HD

The SuperSnake GTX04HD subfeeder delivers a distance and volume welding solution that combines a standard euro-connected welding gun with a strong 4x4 subfeeder and cables package, connecting directly to your standard X5 FastMig or Master M 350 welding machine.



SuperSnake Kit

SuperSnake Kit includes a short wire harness, plug, and amphenol assembly, allowing connection from the SuperSnake GTX to the MasterMig's circuit card.



HR40

2-knob wired remote control for MIG welding



GXR10

On-torch remote control for Flexlite GX series 5 welding guns allows accurate and immediate welding current adjustment and memory channel selection.



Digital Connectivity Module (DCM) Modbus TCP

With the Digital Connectivity Module (DCM), Kempki's cobot-ready welding machine can easily be connected to many different cobot brands. Firmware needs to be uploaded separately.



T35A Travel Cart

T35A is a 2-wheel lightweight travel solution for easy transport of Master M welder.



T25MT

2-wheel cart with floor level cylinder loading.



P43MT

4-wheel undercarriage.



P45MT

4-wheel cart with an innovative pivoting cylinder plate.



Master M Power Source Filter Kit

The power source filter kit includes a plastic frame and Ss mesh filter, giving additional protection to the power source to secure efficient airflow in dusty environments. The assembly clips to the rear of the power source.



Rotameter Gas Flow Regulation Kit

The kit includes the flow gauge and gas hose assembly.



Cabinet Heater Kit

A wire set including a heater resistor. Cabinet Heater Kit prevents moisture in the wire cabinet. Needs to be installed by the Kempki service workshop.



MMA Euro Connector 500A

MMA Euro connector is a single unit assembly attached to the Euro welding gun connector, leaving a female DIX connector socket free so that you can connect the MMA lead male connector to the power source.



TECHNICAL SPECIFICATIONS

Master M 350 A, G

Master M 353 G

Master M 355 G

Master M 358 G

Product code	MSM353G	MSM355G	MSM358G
Connection voltage 3~ 50/60 Hz	380 - 460 V \pm 10 %	380 - 460 V \pm 10 %	380 - 460 V \pm 10 %
Fuse	16 A	16 A	16 A
Output 40% ED	350 A (MMA 330 A)	350 A (MMA 330 A)	350 A (MMA 330 A)
Output 60% ED	280 A	280 A	280 A
Output 100% ED	220 A	220 A	220 A
Wire feed mechanism	4-roll, single-motor	4-roll, single-motor	4-roll, single-motor
Wire feed speed	0.5 - 25 m/min	0.5 - 25 m/min	0.5 - 25 m/min
Rated power at max. current	14 kVA	14 kVA	14 kVA
Recommended generator power (min)	20 kVA	20 kVA	20 kVA
Gun connection	Euro	Euro	Euro
Wire spool weight, max.	20 kg	20 kg	20 kg
Wire spool diameter, max.	300 mm	300 mm	300 mm
Filler wires, Ss	0.8 - 1.2 mm	0.8 - 1.2 mm	0.8 - 1.2 mm
Filler wires, Al	0.8 - 1.2 mm	0.8 - 1.2 mm	0.8 - 1.2 mm
Filler wires, Fe	0.8 - 1.2 mm	0.8 - 1.2 mm	0.8 - 1.2 mm
Filler wires, MC/FC	0.8 - 1.2 mm	0.8 - 1.2 mm	0.8 - 1.2 mm
Diameter of feed rolls	32mm	32mm	32mm
Welding current and voltage range, MIG	15 A/10 V - 350 A/ 45 V	15 A/10 V - 350 A/ 45 V	15 A/10 V - 350 A/ 45 V
Welding current and voltage range, TIG	15 A/1 V - 350 A/ 45 V	15 A/1 V - 350 A/ 45 V	15 A/1 V - 350 A/ 45 V
Welding current and voltage range, MMA	15 A/10 V - 330 A/ 45 V	15 A/10 V - 330 A/ 45 V	15 A/10 V - 330 A/ 45 V
Operating temperature range	-20...+40 °C	-20...+40 °C	-20...+40 °C
External dimensions LxWxH	602 x 298 x 447 mm	602 x 298 x 447 mm	602 x 298 x 447 mm
Weight (no accessories)	27 kg	27 kg	27 kg
Degree of protection	IP23S	IP23S	IP23S
Standards	IEC 60974-1, -10	IEC 60974-1, -10	IEC 60974-1, -10
EMC class	A	A	A
Storage temperature range	-40...+60 °C	-40...+60 °C	-40...+60 °C
Shielding gas pressure (max)	0.5 MPa	0.5 MPa	0.5 MPa

**Master M 350 A, GM****Master M 353 GM****Master M 355 GM****Master M 358 GM**

Product code	MSM353GM	MSM355GM	MSM358GM
Connection voltage 3~ 50/60 Hz	380 - 460 V ± 10 %; 220 - 230 V ± 10 %	380 - 460 V ± 10 %; 220 - 230 V ± 10 %	380 - 460 V ± 10 %; 220 - 230 V ± 10 %
Fuse	16/32 A	16/32 A	16/32 A
Output 40% ED	350 A (MMA 330 A); 300 A (MMA 280 A)	350 A (MMA 330 A); 300 A (MMA 280 A)	350 A (MMA 330 A); 300 A (MMA 280 A)
Output 60% ED	280 A; 240 A	280 A; 240 A	280 A; 240 A
Output 100% ED	220 A; 190 A	220 A; 190 A	220 A; 190 A
Wire feed mechanism	4-roll, single-motor	4-roll, single-motor	4-roll, single-motor
Wire feed speed	0.5 - 25 m/min	0.5 - 25 m/min	0.5 - 25 m/min
Rated power at max. current	14 kVA	14 kVA	14 kVA
Recommended generator power (min)	20 kVA	20 kVA	20 kVA
Gun connection	Euro	Euro	Euro
Wire spool weight, max.	20 kg	20 kg	20 kg
Wire spool diameter, max.	300 mm	300 mm	300 mm
Filler wires, Ss	0.8 - 1.2 mm	0.8 - 1.2 mm	0.8 - 1.2 mm
Filler wires, Al	0.8 - 1.2 mm	0.8 - 1.2 mm	0.8 - 1.2 mm
Filler wires, Fe	0.8 - 1.2 mm	0.8 - 1.2 mm	0.8 - 1.2 mm
Filler wires, MC/FC	0.8 - 1.2 mm	0.8 - 1.2 mm	0.8 - 1.2 mm
Diameter of feed rolls	32mm	32mm	32mm
Welding current and voltage range, MIG	15 A/10 V - 350 A/ 45 V 15 A/10 V - 300 A/ 40 V	15 A/10 V - 350 A/ 45 V; 15 A/10 V - 300 A/ 40 V	15 A/10 V - 350 A/ 45 V; 15 A/10 V - 300 A/ 40 V
Welding current and voltage range, TIG	15 A/1 V - 350 A/ 45 V; 15 A/1 V - 300 A/ 40 V	15 A/1 V - 350 A/ 45 V; 15 A/1 V - 300 A/ 40 V	15 A/1 V - 350 A/ 45 V; 15 A/1 V - 300 A/ 40 V
Welding current and voltage range, MMA	15 A/10 V - 330 A/ 45 V; 15 A/10 V - 280 A/ 40 V	15 A/10 V - 330 A/ 45 V; 15 A/10 V - 280 A/ 40 V	15 A/10 V - 330 A/ 45 V; 15 A/10 V - 280 A/ 40 V
Operating temperature range	-20...+40 °C	-20...+40 °C	-20...+40 °C
External dimensions LxWxH	602 x 298 x 447 mm	602 x 298 x 447 mm	602 x 298 x 447 mm
Weight (no accessories)	27 kg	27 kg	27 kg
Degree of protection	IP23S	IP23S	IP23S
Standards	IEC 60974-1, -10	IEC 60974-1, -10	IEC 60974-1, -10
EMC class	A	A	A
Storage temperature range	-40...+60 °C	-40...+60 °C	-40...+60 °C
Shielding gas pressure (max)	0.5 MPa	0.5 MPa	0.5 MPa



Master M Coolers

	Master M Cooler	Master M Cooler MV
Product code	MSMC1KW	MSMC1KWM
Recommended coolant	MGP 4456 (Kemppi mixture)	MGP 4456 (Kemppi mixture)
External dimensions LxWxH	635 x 305 x 292 mm	635 x 305 x 292 mm
Weight (no accessories)	14.9 kg	14.9 kg
Standards	IEC 60974-2, -10	IEC 60974-2, -10
Tank volume	3 l	3 l
EMC class	A	A
Cooling power	1.0 kW	1.0 kW
Storage temperature range	-40...+60 °C	-40...+60 °C
Operating temperature range (with recommended coolant)	-20...+40 °C	-20...+40 °C
Degree of protection (when mounted)	IP23S	IP23S

ACCESSORIES

Flexlite TX - Master M

Product code	TX223GE4 (4 m) TX253WSE4 (4 m) TX353WE4 (4 m)
--------------	---

Master M Cooler

Product code	MSMC1KW
Recommended coolant	MGP 4456 (Kemppi mixture)
External dimensions LxWxH	635 x 305 x 292 mm
Weight (no accessories)	14.9 kg
Standards	IEC 60974-2, -10
Tank volume	3 l
EMC class	A
Cooling power	1.0 kW
Storage temperature range	-40...+60 °C
Operating temperature range (with recommended coolant)	-20...+40 °C
Degree of protection (when mounted)	IP23S



Master M Cooler MV

Product code	MSMC1KWM
Recommended coolant	MGP 4456 (Kemppi mixture)
External dimensions LxWxH	635 x 305 x 292 mm
Weight (no accessories)	14.9 kg
Standards	IEC 60974-2, -10
Tank volume	3 l
EMC class	A
Cooling power	1.0 kW
Storage temperature range	-40...+60 °C
Operating temperature range (with recommended coolant)	-20...+40 °C
Degree of protection (when mounted)	IP23S



SuperSnake GTX - subfeeder

Product code	Packages
	SuperSnake GTX GAS 10m package, 50mm ² : P400GTX SuperSnake GTX GAS 15m package, 50mm ² : P401GTX SuperSnake GTX GAS 20m package, 50mm ² : P402GTX SuperSnake GTX GAS 25m package, 50mm ² : P403GTX SuperSnake GTX WATER 10m package, 50mm ² : P404GTX SuperSnake GTX WATER 15m package, 50mm ² : P405GTX SuperSnake GTX WATER 20m package, 50mm ² : P406GTX SuperSnake GTX WATER 25m package, 50mm ² : P407GTX SuperSnake GTX WATER 10m package, 70mm ² : P408GTX All packages include SuperSnake GTX motor drive unit and frame (SGTXMDUPF01) and cable
	Other
	SuperSnake GTX motor drive unit: SGTXMDU01 SuperSnake GTX protection frame: SGTXPF01 SuperSnake GTX motor drive unit and frame: SGTXMDUPF01 SuperSnake Kit X5 Feeder: X5702030000
	Cables
	SuperSnake GTXG 10m cable, 50mm ² (Std liner FE 1.0-1.6mm): SGTXG105CBL SuperSnake GTXG 15m cable, 50mm ² (Std liner FE 1.0-1.6mm): SGTXG155CBL SuperSnake GTXG 20m cable, 50mm ² (Std liner FE 1.0-1.6mm): SGTXG205CBL SuperSnake GTXG 25m cable, 50mm ² (Std liner FE 1.0-1.6mm): SGTXG255CBL SuperSnake GTXW 10m cable, 50mm ² (Std liner FE 1.0-1.6mm): SGTXW105CBL SuperSnake GTXW 15m cable, 50mm ² (Std liner FE 1.0-1.6mm): SGTXW155CBL SuperSnake GTXW 20m cable, 50mm ² (Std liner FE 1.0-1.6mm): SGTXW205CBL SuperSnake GTXW 25m cable, 50mm ² (Std liner FE 1.0-1.6mm): SGTXW255CBL SuperSnake GTXW 10m cable, 70mm ² (Std liner FE 1.0-1.6mm): SGTXW107CBL
Description	subfeeder
Output 60% ED	350 A
Wire feed mechanism	2-roll
Wire feed speed	1...25 m/min
Gun connection	Euro
Wire recommendation, 25m Solid Fe/Ss	1.0...1.6 mm
Wire recommendation, 25m Al alloys	1.2...1.6 mm
Wire recommendation, 25m, FCW/MCW	1.2...1.6 mm
Cable diameter	50/70 mm ²
Supply voltage	48 VDC
Protection class	IP23S
Degree of protection	IP23S
External dimensions without protective frame L x W x H	400 mm x 127 mm x 150 mm
External dimensions with protective frame L x W x H	682 mm x 174 mm x 159 mm



SuperSnake GTX04HD - subfeeder

Product code	SGTX04HD01 (incl. motor drive unit and frame) Interconnection cables: Cables SuperSnake GTXG 10m cable, 50mm ² (Std liner FE 1.0-1.6mm): SGTXG105CBL SuperSnake GTXG 15m cable, 50mm ² (Std liner FE 1.0-1.6mm): SGTXG155CBL SuperSnake GTXG 20m cable, 50mm ² (Std liner FE 1.0-1.6mm): SGTXG205CBL SuperSnake GTXG 25m cable, 50mm ² (Std liner FE 1.0-1.6mm): SGTXG255CBL SuperSnake GTXW 10m cable, 50mm ² (Std liner FE 1.0-1.6mm): SGTXW105CBL SuperSnake GTXW 15m cable, 50mm ² (Std liner FE 1.0-1.6mm): SGTXW155CBL SuperSnake GTXW 20m cable, 50mm ² (Std liner FE 1.0-1.6mm): SGTXW205CBL SuperSnake GTXW 25m cable, 50mm ² (Std liner FE 1.0-1.6mm): SGTXW255CBL SuperSnake GTXW 10m cable, 70mm ² (Std liner FE 1.0-1.6mm): SGTXW107CBL
Description	subfeeder
Output 60% ED	350 A
Output 100% ED	270 A
Wire feed mechanism	4-roll, single-motor
Wire feed speed	1...25 m/min
Filler wires, Ss	1.0...1.6 mm
Filler wires, Al	1.2...1.6 mm
Filler wires, Fe	1.0...1.6 mm
Filler wires, MC/FC	1.2...1.6 mm
Supply voltage	12 V
Diameter of feed rolls	32 mm
Operating temperature range	-20...+40 °C
External dimensions LxWxH	561 x 241 x 200 mm
Standards	EN IEC 60974-5:2019, EN IEC 60974-10:2020
EMC class	A
Storage temperature range	-40...+60 °C
Shielding gas pressure (max)	0.5 MPa

SuperSnake Kit

Product code	SP023803
--------------	----------

HR40

Description	Remote control
Product code	HR40



GXR10

Description	Gun Remote
Product code	GXR10

Digital Connectivity Module (DCM) Modbus TCP

Product code	6265051
--------------	---------

T35A Travel Cart

Product code	T35A
--------------	------

T25MT

Description	Cart
Product code	T25MT

P43MT

Description	Trolley
Product code	P43MT

P45MT

Description	Transport unit
Product code	P45MT

Master M Power Source Filter Kit

Product code	SP023312
--------------	----------

Rotameter Gas Flow Regulation Kit

Product code	SP801136
--------------	----------

Cabinet Heater Kit

Product code	SP021614
--------------	----------

MMA Euro Connector 500A

Product code	SP801140
--------------	----------

WWW.KEMPPI.COM

Kemppi is the design leader in the arc welding industry. We are committed to boosting the quality and productivity of welding by continuous development of the welding arc and by working for a greener and more equal world. Kemppi supplies sustainable products, digital solutions, and services for professionals from industrial welding companies to single contractors. The usability and reliability of our products is our guiding principle. We operate with a highly skilled partner network covering over 70 countries to make its expertise locally available. Headquartered in Lahti, Finland, Kemppi employs close to 800 professionals in 16 countries and has a revenue of 195 MEUR in 2022.

